

A COMING-OF-AGE TALE OF A WOMAN WITH CEREBRAL PALSY THAT EXPLORES ASSISTIVE COMMUNICATION IN A LIGHT THAT HASN'T BEEN SEEN IN THE WORLD OF THEATRE BEFORE!

Speechless shockingly overwrites everything you think you know about people without speech, and introduces their own stories to stage.

It tells the story of 19-year-old Rebecca Walker. She has no speech due to cerebral palsy. However, like many people in the UK and worldwide, Rebecca has no access to a communication aid or other methods of alternative communication.

This means that her story, opinions, and devious teenage thoughts remain unspoken. When Mr and Mrs Walker leave their so-called 'baby daughter' with a personal assistant, they did not know that the cotton wool imprisoning world that they lovingly built for their frail little disabled girl would come tumbling down.

Nor did they realise from this, a strong disabled young woman will find her voice, and will use this voice to change her parents view of disability and herself.

SPEECHLESS THE MUSICAL IS THE UNSPOKEN PROJECT CIC'S FIRST MAJOR PRODUCTION. THE UNSPOKEN PROJECT CIC IS AN INCLUSIVE PROFESSIONAL THEATRE COMPANY

We want to know what you think and would welcome feedback via facebook or email (hq.unspoken@gmail.com). Unspoken is a CIC but receives no funding. We rely on the generosity of our supporters to bring the voice of the speechless to the stage and give acting opportunities to disabled people.

UN
NSPOKEN
BRINGING THE UNSPOKEN TO THE STAGE

YOU DON'T NEED SPEECH TO HAVE A VOICE SPEECHLESS

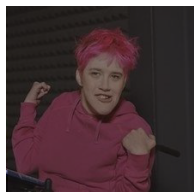


stage@leeds



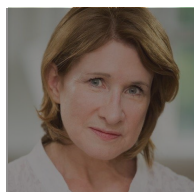
Communication
Matters

THE CAST:



KATE CARYER PLAYING REBECCA WALKER, A DISABLED YOUNG ADULT WITH CEREBRAL PALSY AND NO SPEECH

Kate is a woman with pink hair who also happens to have Cerebral Palsy & use a communication aid. She is a Founding member of the Unspoken Project CIC & has a BA (Hons) in *Performing Arts: Community Development* plus an MA in *Disability Studies & Special Education* from the University of Leeds. At the Communication Matters 2014 she won the Alan Martin award for contribution to the arts, partly for her work for The Unspoken Project.



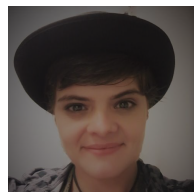
MAGGIE ROBSON PLAYING ANNE WALKER, REBECCA'S MUMMY

Maggie trained at Guildhall & her stage work includes roles in Shakespeare, the classics, contemporary drama, comedies, experimental theatre, musicals & cabarets. Her recent roles are as varied as her repertoire, what's more Maggie is also an accomplished voiceover artist.



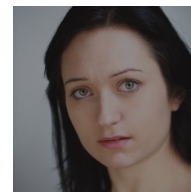
DAVID WARWICK PLAYING PETER WALKER, REBECCA'S DADDY

David Warwick trained at RADA, followed by repertory seasons at Crewe, Coventry, Birmingham, Liverpool & Edinburgh. He has performed at a number of West End theatres, featured in many well know television shows (*East Enders*, *Dr Who*, *Only Fools & Horses*), as a director he has over 40 plays to his credit, some of which have toured internationally.



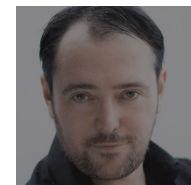
CAZZ REGAN PLAYING BUSTER, REBECCA'S IMAGINARY FRIEND

Caroline began her training in the profession under Sharon Harris & has since performed on television (*The Bill*), provided the voice-over narration for a number of theatre productions (*Sleeping Beauty*, *Murder By the Book*). She does regular work with Comedy Horror Pizza Productions, which can be found on You Tube.



ELIZABETH HUXLEY PLAYING AMY BATES, REBECCA'S BABYSITTER, CARER, PERSONAL ASSISTANT

Since graduating from Drama Studio London in 2011, Elizabeth has toured with various companies across both the UK and Europe. She is an experienced musician who plays the piano, clarinet, flute & is a classically trained mezzo-soprano.



PAUL MOONEY, DIRECTOR

Paul is an actor, director, writer, magician, puppeteer from Manchester. He directed the sell-out production of *Macbeth* for River (2011) at The Scoop & is also artistic director of Unspoken.

For further information on the cast visit the CM website:
www.communicationmatters.org.uk/page/speechless-cast

- Written by Kate Caryer - Directed by Paul Mooney -
 - Music Written & Composed by Elizabeth Huxley -
 - Technical Team: Steve Ansell & Caitlin Mawhinney -
 - Sign language interpretation by Leeds Sign Language Interpreting Service ---
-

THE CAST, COMPANY AND COMMUNICATION MATTERS ARE
INDEBTED TO THE TEAM AT STAGE@LEEDS FOR THEIR SUPPORT OF
THIS PRODUCTION, AND TO THE SPONSORS: MEETINLEEDS AND
THOSE WHO DONATED TO THE FUNDRAISING EVENTS AND
INITIATIVES.
